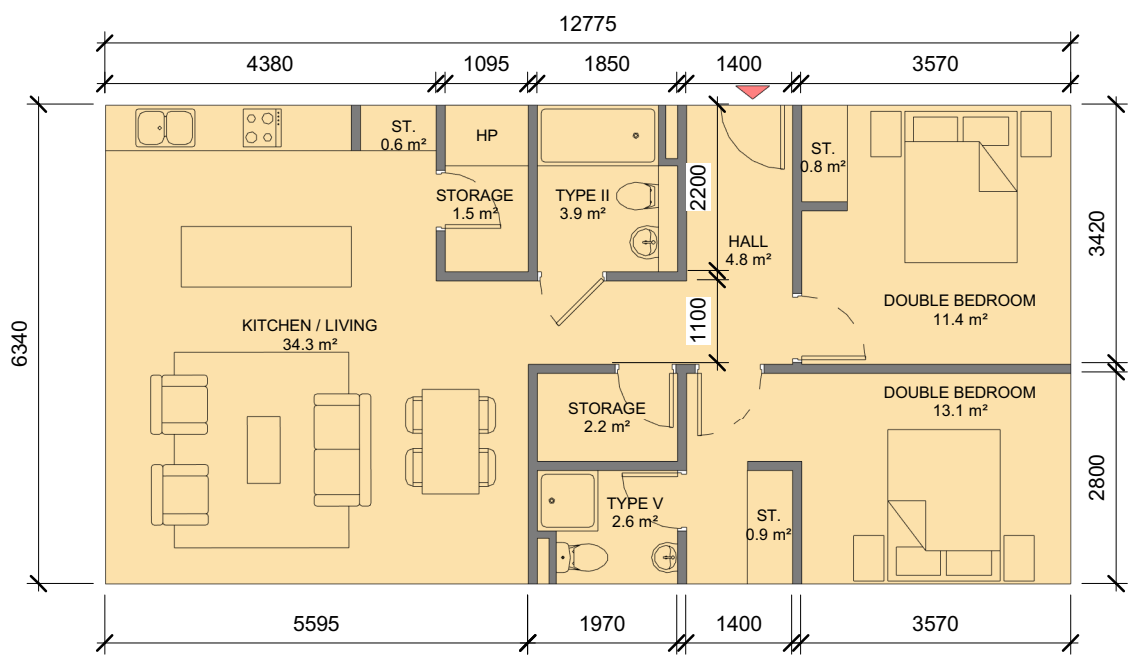


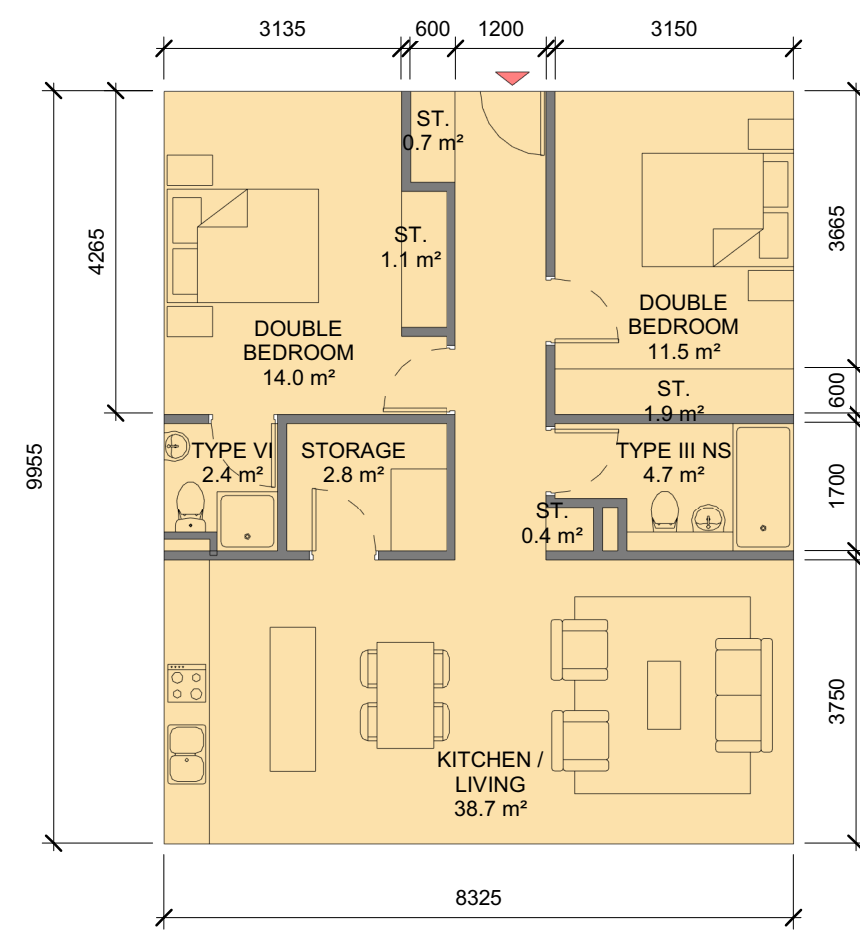
80.9 m²

A-2B-VII	
Name	Area
DOUBLE BEDROOM	14.1 m ²
DOUBLE BEDROOM	11.4 m ²
HALL	5.7 m ²
KITCHEN / LIVING	32.1 m ²
STORAGE	1.9 m ²
STORAGE	1.8 m ²
STORAGE	1.3 m ²
STORAGE	1.1 m ²
STORAGE	1.1 m ²
TYPE II	3.9 m ²
TYPE V	2.6 m ²



81.0 m²

A-2B-VIII	
Name	Area
DOUBLE BEDROOM	13.1 m ²
DOUBLE BEDROOM	11.4 m ²
HALL	4.8 m ²
KITCHEN / LIVING	34.3 m ²
ST.	0.9 m ²
ST.	0.8 m ²
ST.	0.6 m ²
STORAGE	2.2 m ²
STORAGE	2.2 m ²
TYPE II	3.9 m ²
TYPE V	2.6 m ²



82.9 m²

A-2B-IX	
Name	Area
DOUBLE BEDROOM	14.0 m ²
DOUBLE BEDROOM	11.5 m ²
HP	0.8 m ²
KITCHEN / LIVING	38.7 m ²
ST.	1.1 m ²
ST.	1.9 m ²
ST.	0.7 m ²
ST.	0.4 m ²
STORAGE	2.8 m ²
TYPE III NS	4.7 m ²
TYPE VI	2.4 m ²

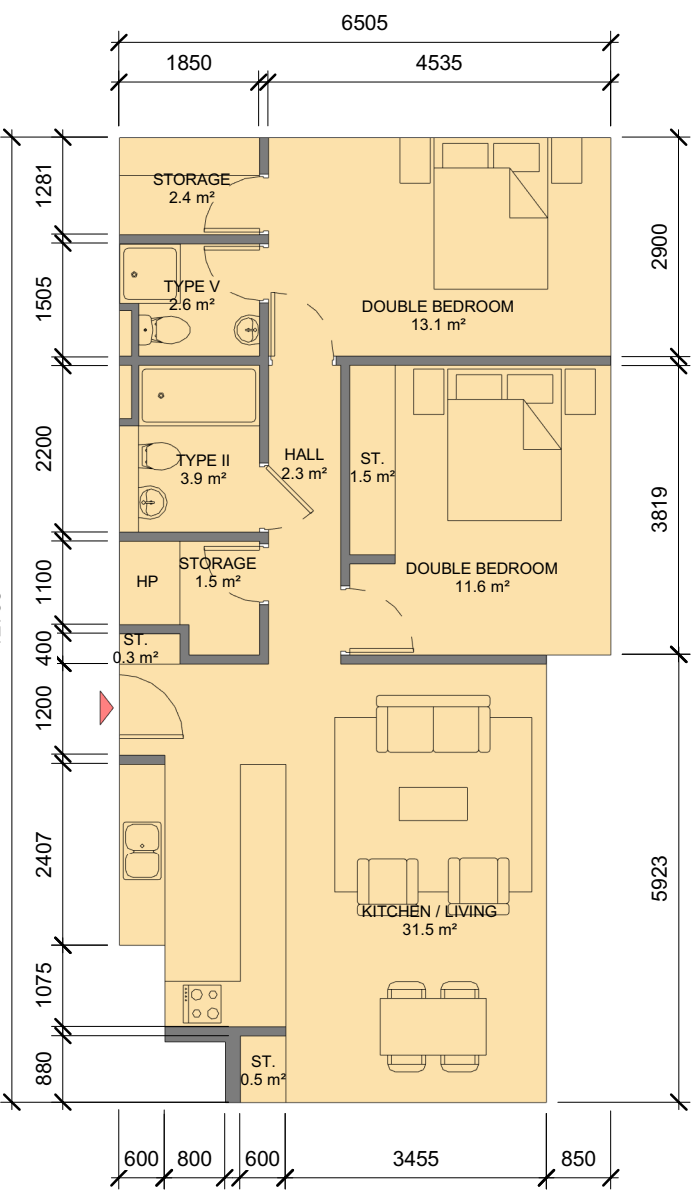
ALL DIMENSIONS TO BE CHECKED ON SITE
NO DIMENSIONS TO BE SCALED FROM THIS DRAWING
DRAWING IS TO BE READ IN CONJUNCTION WITH RELEVANT CONSULTANTS DRAWINGS

NOTE:
This drawing only shows internal floor space, balconies are shown on general arrangement plans and areas depicted on HQA

A-2B-VII - SPACE REQUIREMENTS											
Apartment Area	Required Apartment Area	Required Area Met	Kitchen - Living Area	Required Kitchen - Living Area	Required Area Met	Total Bedroom Area	Required Total Bedroom Area	Required Area Met	Total Storage Area	Required Total Storage Area	Required Area Met
80.9 m ²	73.0 m ²	Yes	32.1 m ²	30.0 m ²	Yes	25.5 m ²	24.4 m ²	Yes	6.1 m ²	6.0 m ²	Yes

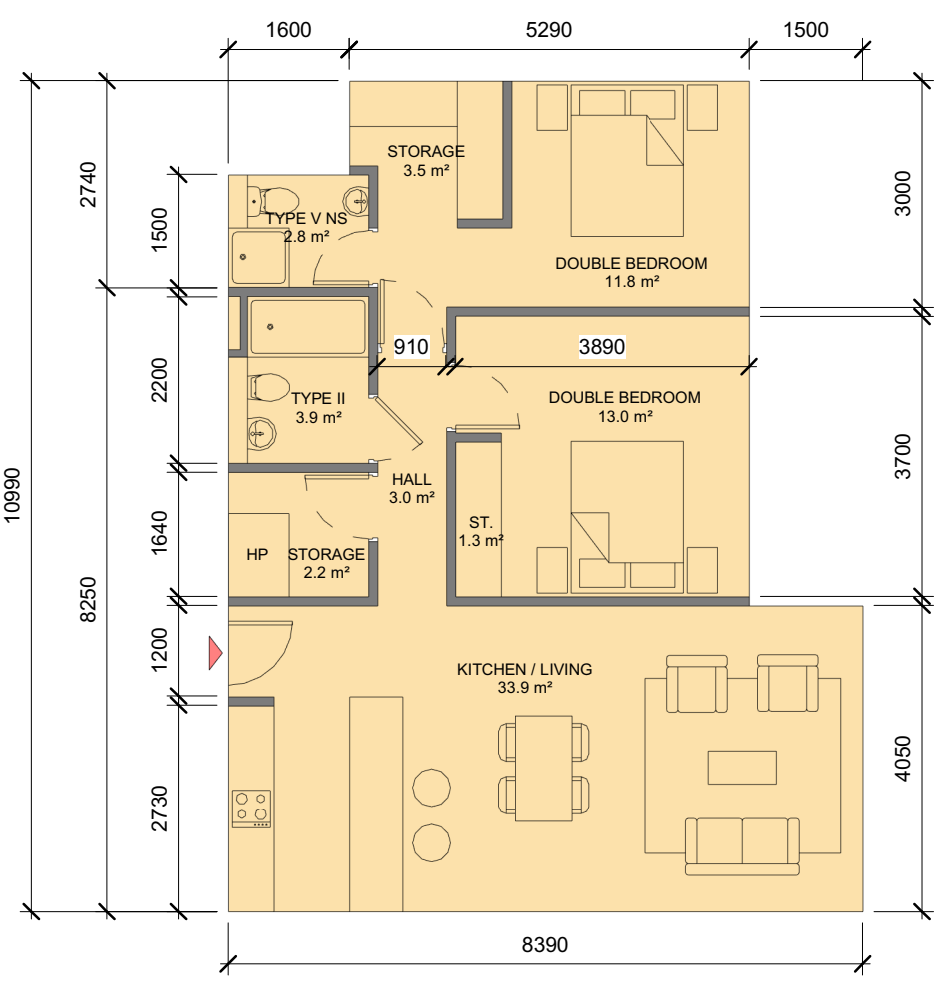
A-2B-VIII - SPACE REQUIREMENTS											
Apartment Area	Required Apartment Area	Required Area Met	Kitchen - Living Area	Required Kitchen - Living Area	Required Area Met	Total Bedroom Area	Required Total Bedroom Area	Required Area Met	Total Storage Area	Required Total Storage Area	Required Area Met
81.0 m ²	73.0 m ²	Yes	34.3 m ²	30.0 m ²	Yes	24.5 m ²	24.4 m ²	Yes	6.0 m ²	6.0 m ²	Yes

A-2B-IX - SPACE REQUIREMENTS											
Apartment Area	Required Apartment Area	Required Area Met	Kitchen - Living Area	Required Kitchen - Living Area	Required Area Met	Total Bedroom Area	Required Total Bedroom Area	Required Area Met	Total Storage Area	Required Total Storage Area	Required Area Met
82.9 m ²	73.0 m ²	Yes	38.7 m ²	30.0 m ²	Yes	25.5 m ²	24.4 m ²	Yes	6.9 m ²	6.0 m ²	Yes



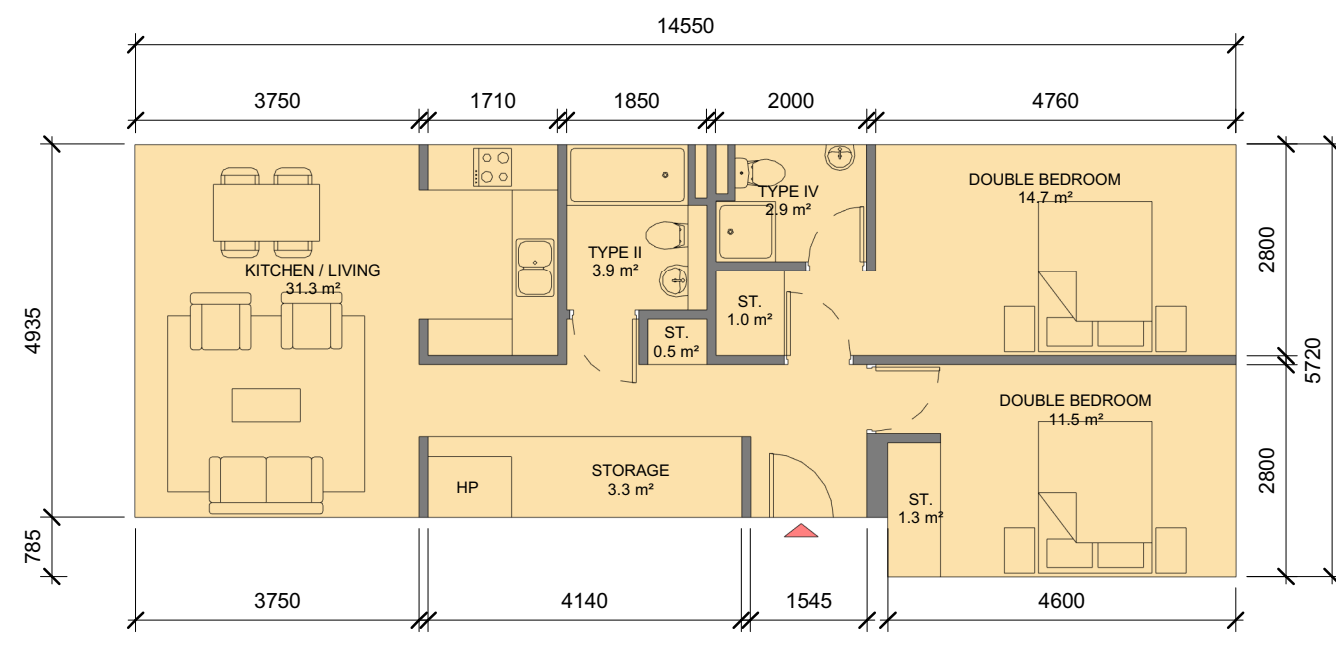
75.7 m²

A-2B-X	
Name	Area
DOUBLE BEDROOM	11.6 m ²
DOUBLE BEDROOM	13.1 m ²
HALL	2.3 m ²
KITCHEN / LIVING	31.5 m ²
ST.	0.3 m ²
ST.	0.5 m ²
ST.	1.5 m ²
STORAGE	1.5 m ²
STORAGE	2.4 m ²
TYPE II	3.9 m ²
TYPE V	2.6 m ²



79.8 m²

B-2B-I	
Name	Area
DOUBLE BEDROOM	11.8 m ²
DOUBLE BEDROOM	13.0 m ²
HALL	3.0 m ²
KITCHEN / LIVING	33.9 m ²
ST.	1.3 m ²
STORAGE	2.2 m ²
STORAGE	3.5 m ²
TYPE II	3.9 m ²
TYPE V NS	2.8 m ²



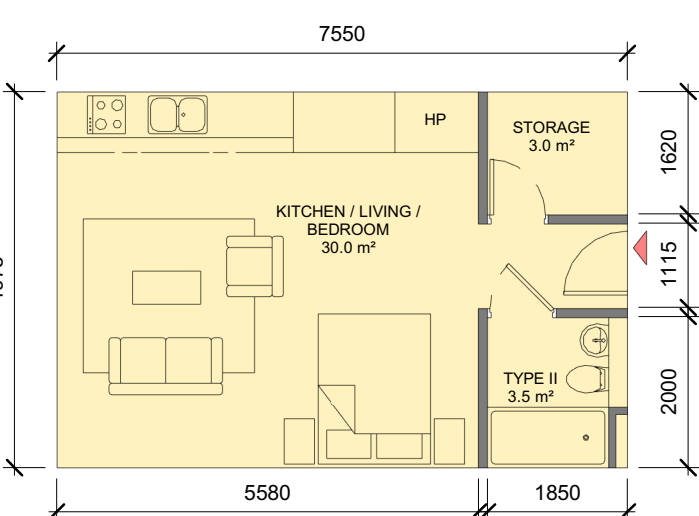
75.4 m²

B-2B-II	
Name	Area
DOUBLE BEDROOM	14.7 m ²
DOUBLE BEDROOM	11.5 m ²
KITCHEN / LIVING	31.3 m ²
ST.	1.3 m ²
ST.	1.0 m ²
ST.	0.5 m ²
STORAGE	3.3 m ²
TYPE II	3.9 m ²
TYPE IV	2.9 m ²

A-2B-X - SPACE REQUIREMENTS											
Apartment Area	Required Apartment Area	Required Area Met	Kitchen - Living Area	Required Kitchen - Living Area	Required Area Met	Total Bedroom Area	Required Total Bedroom Area	Required Area Met	Total Storage Area	Required Total Storage Area	Required Area Met
75.7 m ²	73.0 m ²	Yes	31.5 m ²	30.0 m ²	Yes	24.7 m ²	24.4 m ²	Yes	6.2 m ²	6.0 m ²	Yes

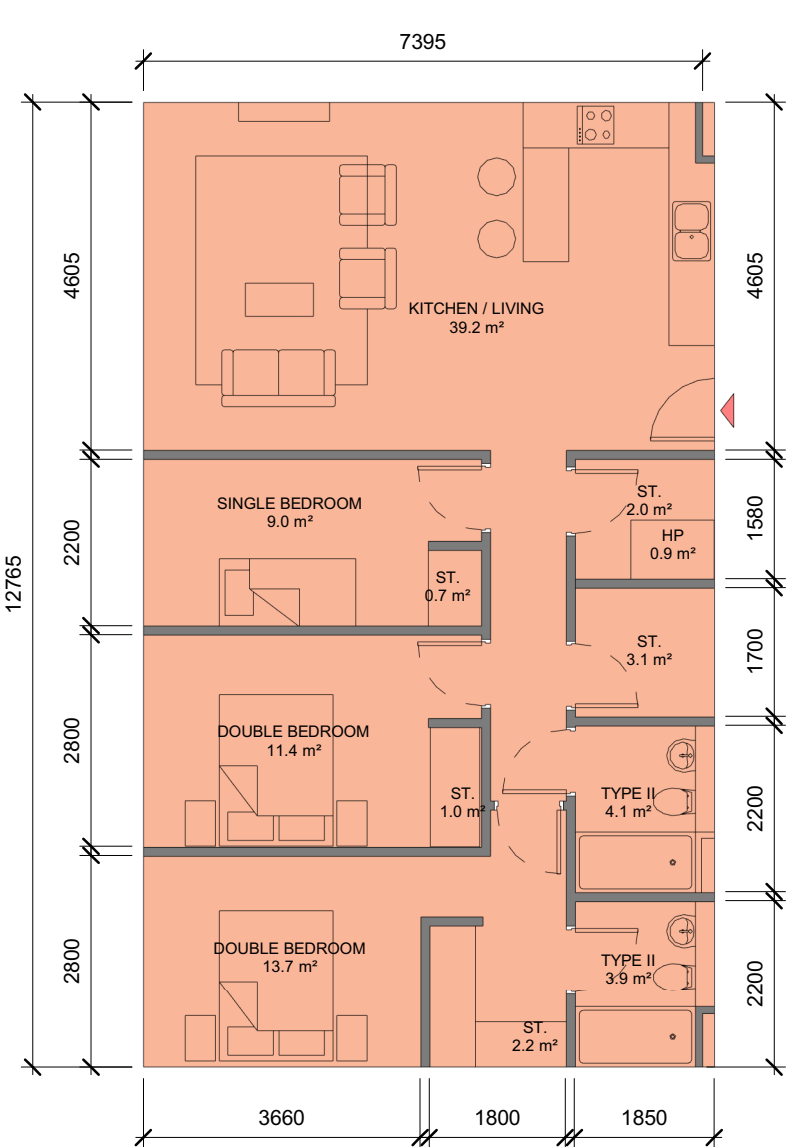
B-2B-I - SPACE REQUIREMENTS											
Apartment Area	Required Apartment Area	Required Area Met	Kitchen - Living Area	Required Kitchen - Living Area	Required Area Met	Total Bedroom Area	Required Total Bedroom Area	Required Area Met	Total Storage Area	Required Total Storage Area	Required Area Met
79.8 m ²	73.0 m ²	Yes	33.9 m ²	30.0 m ²	Yes	24.8 m ²	24.4 m ²	Yes	7.0 m ²	6.0 m ²	Yes

B-2B-II - SPACE REQUIREMENTS											
Apartment Area	Required Apartment Area	Required Area Met	Kitchen - Living Area	Required Kitchen - Living Area	Required Area Met	Total Bedroom Area	Required Total Bedroom Area	Required Area Met	Total Storage Area	Required Total Storage Area	Required Area Met
75.4 m ²	73.0 m ²	Yes	31.3 m ²	30.0 m ²	Yes	26.2 m ²	24.4 m ²	Yes	6.1 m ²	6.0 m ²	Yes



37.6 m²

B-ST-I	
Name	Area
KITCHEN / LIVING / BEDROOM	30.0 m ²
STORAGE	3.0 m ²
TYPE II	3.5 m ²



96.4 m²

B-3B-I	
Name	Area
DOUBLE BEDROOM	11.4 m ²
DOUBLE BEDROOM	13.7 m ²
KITCHEN / LIVING	39.2 m ²
SINGLE BEDROOM	9.0 m ²
ST.	2.2 m ²
ST.	1.0 m ²
ST.	0.7 m ²
ST.	2.0 m ²
ST.	3.1 m ²
TYPE II	4.1 m ²
TYPE II	3.9 m ²

B-ST-I - SPACE REQUIREMENTS											
Apartment Area	Required Apartment Area	Required Area Met	Kitchen - Living Area	Required Kitchen - Living Area	Required Area Met	Total Bedroom Area	Required Total Bedroom Area	Required Area Met	Total Storage Area	Required Total Storage Area	Required Area Met
37.6 m ²	37.0 m ²	Yes	30.0 m ²	30.0 m ²	Yes	30.1 m ²	30.0 m ²	Yes	3.0 m ²	3.0 m ²	Yes

B-3B-I - SPACE REQUIREMENTS											
Apartment Area	Required Apartment Area	Required Area Met	Kitchen - Living Area	Required Kitchen - Living Area	Required Area Met	Total Bedroom Area	Required Total Bedroom Area	Required Area Met	Total Storage Area	Required Total Storage Area	Required Area Met
96.4 m ²	90.0 m ²	Yes	39.2 m ²	38.0 m ²	Yes	34.1 m ²	32.4 m ²	Yes	9.0 m ²	9.0 m ²	Yes

REV	DATE	DESCRIPTION	CHK	DRN
A2	15.11.2019	ISSUED FOR PLANNING APPROVAL	RJ	HJL
A1	18.07.2019	ISSUED FOR ABP PRE-APPLICATION	RJ	BM

STATUS CODE DESCRIPTION
ISSUED FOR PLANNING APPROVAL

CLIENT
SANDYFORD GP Ltd.

PROJECT
SANDYFORD CENTRAL

DRAWING
PROPOSED APARTMENTS BLOCK A & B

PROJECT NUMBER
950572

DATE
18/07/2019

SCALE@ A1:
1: 100

DRAWN/CHECKED:
SR/ SR

REVISION
A2

DRAWING NUMBER
SFC-HJL-XX-ZZ-DR-A-8101

STATUS CODE:
A1